



maars LIVING WALLS®

# string<sup>2</sup>

the ultimate wall, with the ultimate values  
终极之墙, 终极价值



At Maars, we are always looking for ways to improve the environment and create workplaces where people feel comfortable and perform in the best possible way. That is why we came up with the idea of Living Walls.

An inspiring concept of remountable, integrated wall solutions for healthcare, office buildings, airports, education, hospitality, industry and retail, among others.

The most visionary architects worldwide choose Living Walls. They have seen us as the supplier of innovative wall solutions for over 75 years. Solutions that contribute to the productivity and well-being of employees as well as being distinctive due to their sustainable and circular nature.

In this way, we want to surprise and inspire people. By providing a unique visual experience, optimal comfort, well-being, security and privacy. Sustainable, environmentally-friendly and with Cradle to Cradle certification.

Welcome to the world of Maars!

一直以来，马尔斯在不断地探寻提升环境和为人们营造舒适高效工作场所的方法，为此我们提出了“Living Walls”的理念。

“Living Walls”体现于我们的墙体产品能够灵活应用于医疗、办公、机场、教育、酒店、工业和零售等领域，真正实现装配式、可重复安装。

全球最有远见的设计师都在选择“Living Walls”。75年以来，他们将马尔斯视为引领和创新墙体解决方案的供应商，来帮助他们设计出更能激发员工创造力、提升工作幸福感的优秀作品，且因可持续和循环利用的性质而与众不同。

通过这种方式，我们为世人来带惊喜和启发。正是基于 Cradle to Cradle 可持续发展的理念，马尔斯向业界提供了独特的视觉体验，最棒的舒适度、幸福感、安全感和隐私感。

欢迎来到马尔斯的世界！





design

设计自由

string<sup>2</sup>

The modular, sustainable String<sup>2</sup> wall solution offers ingenious and challenging options for inspiring, atmospheric and efficient work and meeting spaces. The system combines creative and architectural options, providing maximum design versatility. String<sup>2</sup> also distinguishes itself with outstanding acoustic and fire-resistant performances.

模块化、可持续的 String<sup>2</sup> 墙体解决方案，为设计师创造出鼓舞人心、激发活力的工作及会议空间，提供了巧妙且具有挑战性的选项。该系统兼顾了设计创意和建筑多样性的需求，为设计师提供了最大的创意空间，同时 String<sup>2</sup> 还以出色的声学 and 防火性能而著称。

freedom

5/24







# remountable

可重复安装

string<sup>2</sup>

Sustainability and circularity are in the center of Maars Living Walls design. We create products that are designed to excel in modular construction and re-use as a standard practice. The ability to reuse our products is both good for the environment and also the flexibility of your space.

The key sustainability features of String<sup>2</sup>:

- Uniform modules; separate and quick and easy to move
- The base of the system is steel
- Fully demountable into reusable or recyclable parts
- Refurbishable panels; with a new finish or workmanship the wall will last for years

可持续和循环利用，是马尔斯 Living Walls 的核心理念。我们创造的产品旨在模块化结构中表现出色，并作为标准做法重复使用。产品的重复利用性既有利于环境，也有利于实现您空间的灵活性。

String<sup>2</sup> 的主要可持续性特征：

- 模块化，灵活搭配且易于拆装
- 框架采用钢制材料，可回收
- 配件完全可拆卸且能回收、重复使用
- 面板可替换，能随时更换成新的饰面或风格，不断延续墙体的生命力





# ultimate form of functionality

String<sup>2</sup> sets the standard for functionality and the applicability of partitions. The basis for this is the very solid construction combined with an ingenious modular click system. This allows for sustainable, reusable and aesthetic designs with both horizontal and vertical lines. Can be carried out with virtually invisible joints between the panels.

Easily find the height with the String<sup>2</sup> system. By stacking - up to six meters high - or combining with other materials and elements, you can achieve a sleek overall look with an elegant aesthetic. The versatile system has already been used internationally in many ambitious projects, where the creative and constructional options have been integrated in the best possible way.

## 极限的功能

String<sup>2</sup> 为功能分区设定了标准。其基础是坚固的钢制龙骨和灵活的模块化面板，这允许在水平和垂直线条上，进行可持续的、可重复使用的美观设计，并允许在不同风格的面板之间进行无缝连接。

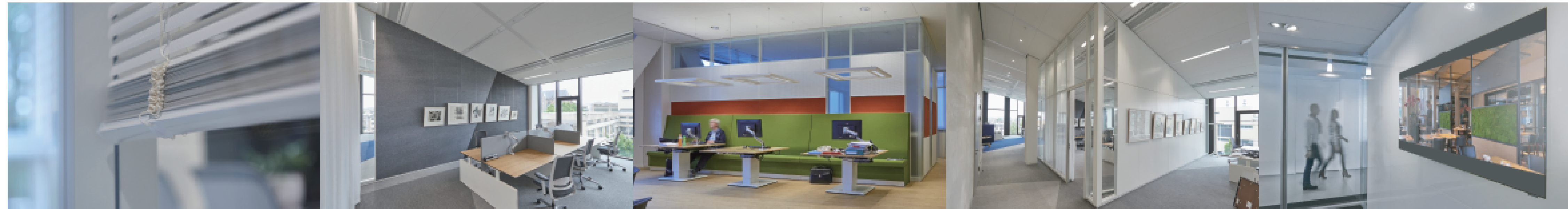
String<sup>2</sup> 能够轻松满足层高，通过多层结构，最高达到6米，让您获得时尚的整体外观和优雅的视觉美感。这个系统已经在全球诸多极具挑战的项目上应用，其创意灵活性和施工兼容性都让人赞叹。

string<sup>2</sup>



9/24

可随时翻新



# integrated functionality

集成功能

string<sup>2</sup>

String<sup>2</sup> has been designed as the ultimate system wall, with which anything is possible. In addition to modular construction and maximum integration options, String<sup>2</sup> allows you to 'design what you think & go beyond'. Such as high sound values, fire resistance, flexibility, stacking to unprecedented heights, patented integrated ventilation studs and special studs for attaching shelves.

String<sup>2</sup> also offers integrated modules for light, air, sound, multimedia, climate control, cabinets, design panels and furniture elements. In addition, String<sup>2</sup> is suitable for the Maars Magnetics add-ons, consisting of magnetic coat hooks, picture hooks, document holders, nameplates and many other smart magnetic solutions.

String<sup>2</sup> 被设计为终极之墙，有了它，一切皆有可能。String<sup>2</sup> 具有模块化和饰面集成选项，并且拥有高隔音、耐火性、灵活性、超高高度、获得专利的集成通风龙骨，这足以支持您“设计您所想或者超越你想设计的”。

String<sup>2</sup> 还提供用于灯光、空气、声音、多媒体、温控、橱柜、面板和家具元素的集成模块。此外，String<sup>2</sup> 还适用于马尔斯 Magnetics 组件，包括磁吸、衣帽钩、图片挂钩、文件夹、铭牌和其它智能解决方案。

11/24





Thanks to String<sup>2</sup>'s versatility, functionality and its many combination and integration options, this innovative wall system is in demand for healthcare applications. The steel walls score high in terms of hygiene, fire resistance, air tightness, durability and acoustic properties. They are also X-ray proof and can be provided with antibacterial coatings.

由于 String<sup>2</sup> 的多样性、功能性及其众多组合和集成选项，这种创新的隔断系统在健康医疗应用中很受欢迎。钢墙在卫生、防火、气密性、耐用性和声学性能方面得分都很高。它们不仅可以防护X射线辐射，还可以提供抗菌涂层。

# health care

健康医疗

string<sup>2</sup>







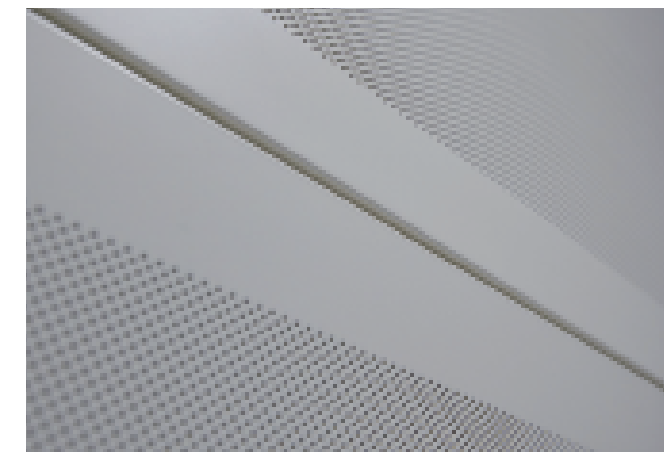
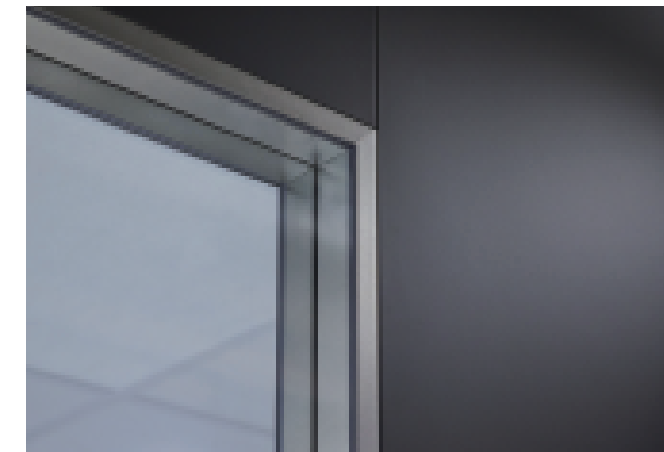
# endless combinations

无限组合

string<sup>2</sup>

Thanks to the bi-block principle, String<sup>2</sup> can be combined almost indefinitely with materials and elements. Such as a wall covered with steel on one side and textile, wood or another material on the other. This in turn can be easily combined with various glazing options. Think of double, single or half glazing, combined with a unique absorption panel for optimal absorption and sound insulation, or fitted with integrated horizontal blinds.

基于 bi-block 原理，String<sup>2</sup> 几乎可以让材料和元素无限组合。例如一面用钢饰面，另一面为布艺软包、或木饰面，亦或是其它的材料，同时也可以结合各种玻璃选项。考虑双层、单层或半玻璃，结合独特的吸音板以实现最佳吸音和隔音效果，也可以配备集成的水平百叶窗。





# features & benefits

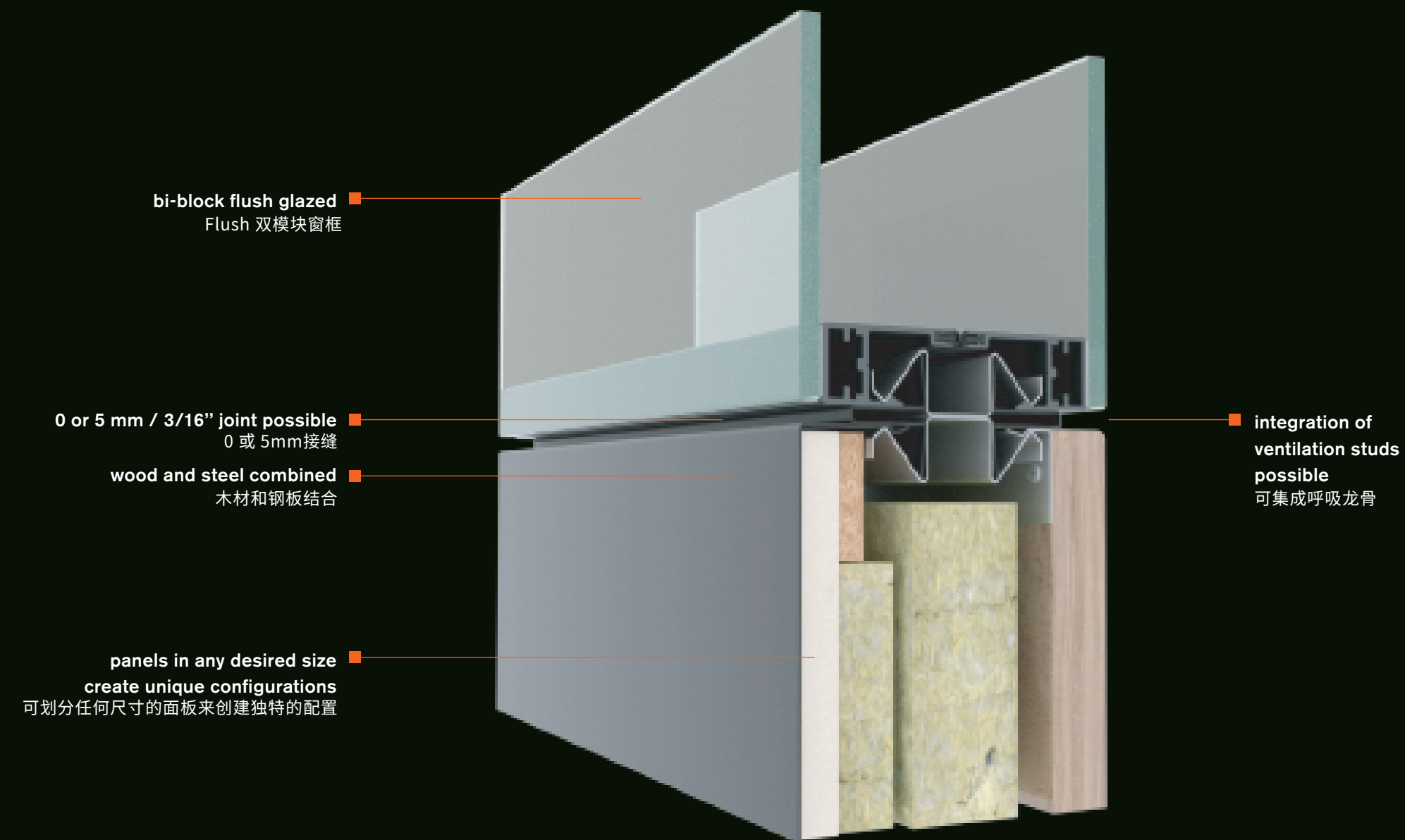
All String<sup>2</sup> elements are quick and easy to connect, thanks to the innovative Maars click system. This allows you to remain flexible with regard to future modifications.

- Infinite finishing options
- Most flexible configuration
- Sound insulation up to 55 dB / 56 STC
- Fire resistance of EI 60
- Easy installation through patented click system
- Cradle to Cradle Bronze / Silver certification

## 特点与优势

得益于创新的卡扣系统，马尔斯所有 String<sup>2</sup> 墙体元素都能被简单快速地进行连接。这也为未来的改造提供了独特的灵活性。

- 多种饰面选项
- 最灵活的配置
- 隔音高达55dB
- 耐火性 EI 60
- 通过专利卡扣系统轻松安装
- Cradle to Cradle 铜级/银级认证





# maximum performance

String<sup>2</sup> combines functionality, durability and versatility while offering maximum performance. This makes the acoustic and fire-resistant performance of String<sup>2</sup> wall solutions unprecedented. Fire resistance is rated according to EN standards with a score of EI 60.

## 最佳表现

String<sup>2</sup> 结合了功能性、耐用性和多样性，同时提供最佳性能。这使得 String<sup>2</sup> 墙体解决方案的声学 and 防火性能前所未有，根据 EN 标准对耐火性进行评级，得分为 EI 60。





# committed to circularity

For Maars, the well-being of people in any space is essential. We are always looking for sustainable, responsible solutions and we are constantly researching new production techniques. Reduce, reuse and recycle are firmly rooted in our business philosophy: from eco-friendly coatings to CO<sub>2</sub> offsets and the 5S 'lean manufacturing' methodology. Our products help improve your BREEAM, LEED and WELL scores. We have established an integrated operational management system for all critical quality, environmental and safety processes in order to have full control over our quality, environmental and health & safety policies. By scrutinising the entire production process, we can be more efficient in terms of production while reducing energy consumption. Maars' ongoing commitment to innovation and circularity has been recognised with a Cradle to Cradle Bronze certificate for all our wall systems and ISO-9001 / ISO-14001 certification. (Be sure to ask about our certified products.)



## 致力于循环

马尔斯始终把人类的空间福祉放在首位。我们一直在寻找可持续、负责任的解决方案，并不断研究新的生产技术。“减量化、再利用、可循环”深深植根于我们的经营理念：从环保涂料到二氧化碳抵消和5S“精益制造”方法论。同时，我们的产品也有助于提高 BREEAM、LEED 和 WELL 分数。为了能完美掌控品质、环境、健康和安全管理政策，马尔斯设立了一套完整的操作管理系统，通过此系统，质量、环境和安全的关键工序都能得以保障。通过对整个生产过程进行审查，我们可以在降低能耗的同时提高生产效率。马尔斯对创新和循环的持续承诺受到了广泛认可，我们的所有墙体都获得了 Cradle to Cradle 的铜级认证和 ISO-9001 / ISO-14001 认证。（请务必咨询我们的认证产品）



string<sup>2</sup>

# create and design interiors beyond your imagination

Maars 4D provides you with intelligent, highly visual and intuitive space planning software to make specifying and selling products easier. Maars 4D enables you to create realistic visualisations, including a moving fly through of your future space. This allows you to provide your customer a unique experience before you have even started the installation.

马尔斯4D为您提供智能、高度可视化和直观的空间规划软件，使指定和销售产品更便捷。马尔斯4D使您能够创建逼真的可视化效果，包括在未来空间中移动飞行。这使您甚至可以在开始安装之前为您的客户提供独特的体验。



创造和室内设计  
超乎你的想象

visit [www.maarslivingwalls.com](http://www.maarslivingwalls.com) / [www.maarslivingwalls.com.cn](http://www.maarslivingwalls.com.cn) to learn the possibilities

访问 [www.maarslivingwalls.com](http://www.maarslivingwalls.com) / [www.maarslivingwalls.com.cn](http://www.maarslivingwalls.com.cn) 了解更多

21/24

Rendered with maars 4D software

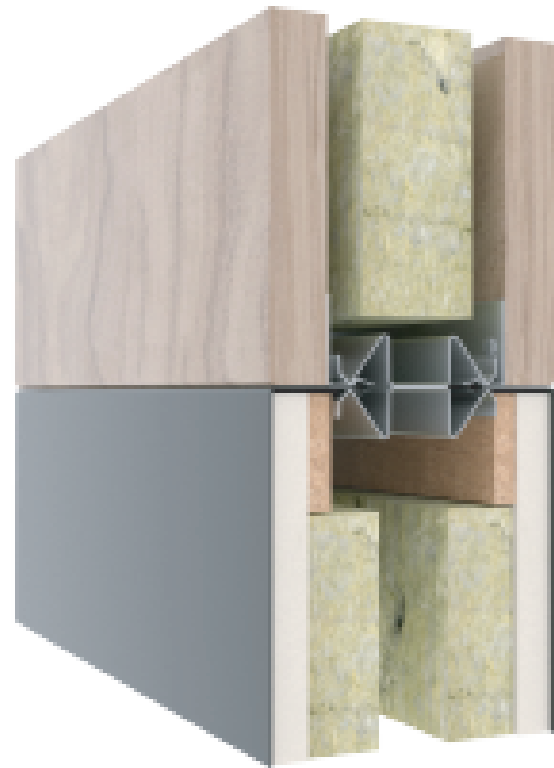
# great performance, unique details

## 出色的性能 独特的细节



Cross-section of the bottom of the wall.  
With adjustable skirting for flexible  
installation.

底部带有调节装置，可灵活安装



Seamless connection with 0 joint  
between panels with different  
finishes.

不同饰面的面板之间 0mm 无缝连接

## technical specifications 技术参数

### DESCRIPTION 介绍

Demountable system wall with steel and chipboard panels  
带有钢和装饰面板的可拆卸系统墙体

### CONSTRUCTION 结构

Wall thickness: 100 mm / 3 15/16"  
Connections floor / ceiling 1.5 mm / 1/16"  
galvanised steel profiles  
Oxidised clamp studs in galvanised steel in  
0 or 5 mm / 13/64" joint  
Horizontal and vertical partitions are  
possible

厚度: 100 mm

天轨和地轨: 1.5 mm镀锌钢板制

0 或 5 mm分缝的镀锌钢制龙骨

可水平垂直拼接组合

### CLOSED MODULES 实体模块

- 0.8 mm / 1/32" galvanised steel with  
12.5 mm / 1/2" gypsum panel and  
integrated clamp stud setting
- 18 mm / 5/8" chipboard with melamine,  
HPL or veneer top layer
- Fabric covered steel panels
- 0.8 mm镀锌钢板背衬 12.5 mm石膏板
- 18 mm刨花板, 带有三聚氰胺、HPL 或单板
- 钢板表面可用布艺饰面

### DOOR MODULES 门模块

Door frames: Steel or aluminium  
Wide range of 40 mm / 1 5/8" or  
100 mm / 3 15/16" thick doors.

门框: 钢制或铝制

厚度 40 mm 或 100 mm 厚

### GLAZED MODULES 玻璃系统模块

Window frame, aluminium, double-glazed  
with 4 mm / 1/8", 6 mm / 1/4"  
or 8 mm / 5/16", glass in monoblock,  
bi-block or bi-block flush

单模块双玻铝制窗框可配 6 或 8mm 玻璃,  
双模块明框或双模块隐框系统

### STANDARD SIZES 标准尺寸

Height 3,100 mm / 10' 2 1/16"  
Width 900 / 1,200 mm /  
2' 11 7/16" / 3' 11 1/4"  
Nominal skirting height  
• 10 – 40 mm / 3/8" - 1 5/8" Ceiling  
• 10 – 60 mm / 3/8" - 2 3/8" Floor  
Weight approx. 35 kg/m<sup>2</sup>

高度 3,100 mm 宽度 900 / 1,200 mm

天地轨高度

• 10 – 40 mm天轨 • 10 – 60 mm地轨

重量约 35kg/m<sup>2</sup>

### FINISHES 饰面

- Surface treatment • 表面处理
- Visible metal parts: environmentally  
friendly epoxy powder coating, layer  
thickness approx. 80 µ. Based on the  
standard Maars colours. Other colours  
in consultation.

- Extensive range of finishes in fabric,  
HPL, veneer available.

- 可见金属部分: 环保静电粉末喷涂,  
层厚约 80µ。颜色可根据马尔斯标  
准色卡, 也可客户定制。

- 提供广泛的织物、HPL、单板饰面。

### • Glazing • 玻璃

- Several different options are possible,  
such as acoustic laminated, coated,  
privacy glass or sandblasted.
- 种类繁多, 例如隔音夹胶玻璃、烤漆、  
隐私玻璃等。

### INSTALLATION TOLERANCES 安装公差

Floor +/- 13 mm / 1/2"

Ceiling +/- 13 mm / 1/2"

地面: ±13 mm

天花: ±13 mm

### INTEGRATION OF ELECTRICITY AND DATA

CABLES 强弱电走线支持

Perforated clamp studs allow wiring to  
be incorporated into the wall. Removable  
panels make the wall easily accessible for  
subsequent changes.

夹紧龙骨上有预开孔方便于走线, 可拆卸的面板  
结构方便于维护维修。

### SOUND 隔音

Weighted sound insulation index in  
accordance with  
EN ISO 717-1

Closed modules, steel: up to RW 55 dB /  
56 STC

Closed modules, chipboard: up to  
RW 50 dB / 50 STC

Glazed modules: up to RW 51 dB /  
50 STC

Door module closed: up to RW 44 dB /  
44 STC

Door module glazed: up to RW 41 dB /  
41 STC

标准隔音参数参照: EN ISO 717-1

钢板实体模块: 高达 RW 50 dB

刨花板实体模块: 高达 RW 50 dB

玻璃系统模块: 高达 RW 48 dB

实体门模块: 高达 RW 44 dB

玻璃门模块: 高达 RW 41 dB

### FIRE 防火

Fire resistance in accordance with  
EN 1363-2, EN1364-1 and EN 1634-1.

Closed: up to EI 60

Glazed: up to EI 60

Door: up to EI 60

符合 EN 1363-2、EN1364-1 和 EN 1634-1 的耐火性。

实体系统: 高达 EI 120

玻璃系统: 高达 EI 60

门系统: 高达 EI 60

### LIVING OPTIONS 活性选项

Maars offers a wide range of options that  
can be integrated into our wall system,  
depending on the wall type. Ventilation  
studs, sound panels, cabinets, shelf  
supports, climate control panels, dynamic  
light, multimedia, fabric covered panels,  
privacy glass or Maars Magnetics. Ask  
your Sales Project Manager about our total  
product range.

根据墙体类型, 马尔斯提供可整合入隔断系统的  
广泛选项。通风龙骨、吸音板、橱柜、货架系统  
、温控板、动态照明、多媒体、布艺包板、隐私  
玻璃以及各式马尔斯磁吸挂件, 更多选项请与我  
们的销售联系。

**maars** LIVING WALLS®

12F South block, Guoco Changfeng City, No. 1, Lane 556,  
Daduhe Road, Putuo District, Shanghai  
上海市普陀区大渡河路556弄1号国浩长风城南楼12层

T+86 021 3251 5505  
Info@maarsgroup.com.cn  
www.maarslivingwalls.com.cn



**products** 产品

**Metaline**

**String<sup>2</sup>**

**Panorama**

**Horizon**

**lalinea**

**lineaCube**

**Doors**

**Living Options**

**expertise** 专长

**Office** 办公室

**Care & Cure** 医院

**Education** 教育

**Revitalisation** 翻新

**Airport** 机场

**Hospitality** 酒店

**Industrial** 工业

**Automotive** 汽车